

FME SERVER AUTOMATIONS



FRÅGOR

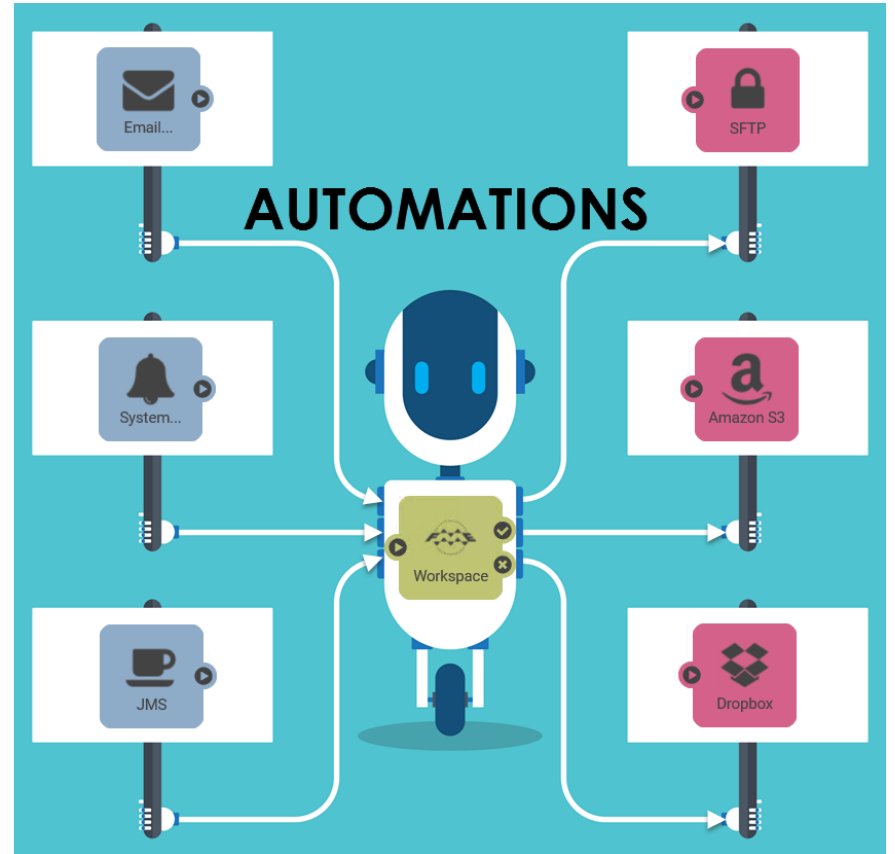
Anton
Sandström



Mikael
Månsson

Agenda

- Vad är Automations?
- FME Server Automations - GUI
- FME Server Automations Writer





POLL

Vad är Automations?



Triggers



Actions



External actions

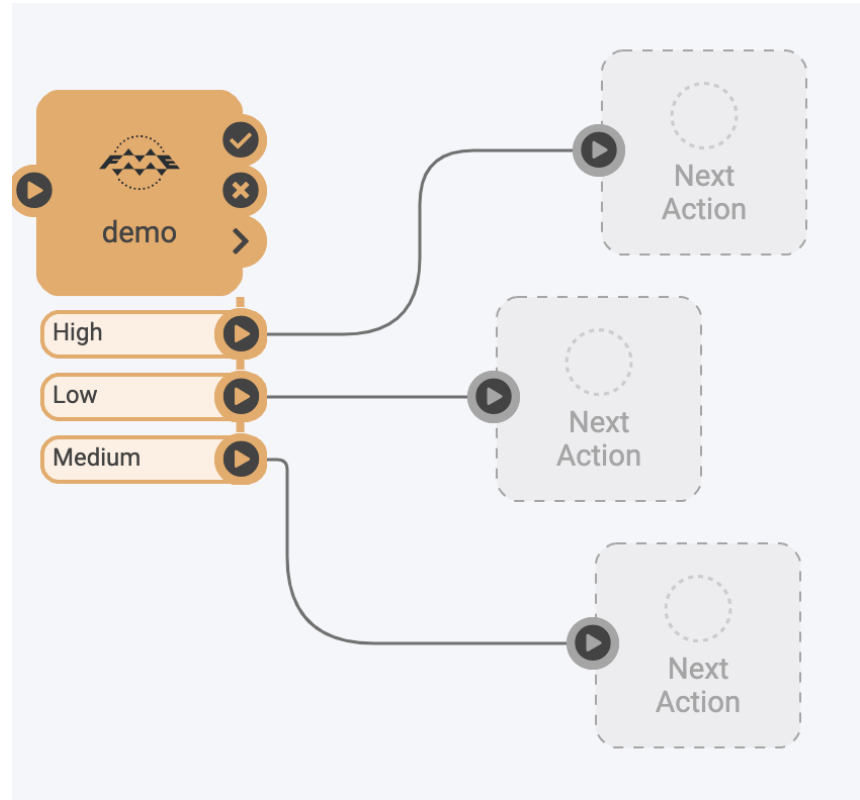
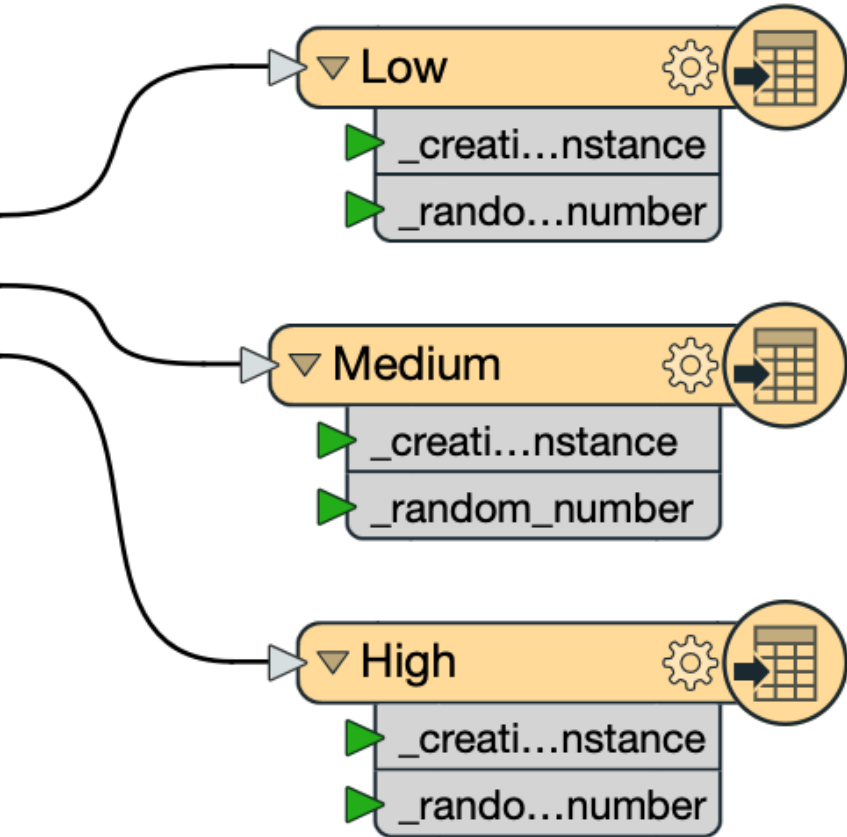
FME Server Automations - GUI

The screenshot displays the FME Server Automations GUI. The browser address bar shows 'localhost'. The page title is 'Automations'. The left sidebar contains a navigation menu with the following items: Run Workspace, Automations (expanded), Build Automation, Manage Automations, Notifications (Classic), Schedules, Jobs, Workspaces, Server Apps, Projects, and Files & Connections. The 'ADMIN' label is visible at the bottom of the sidebar. The main content area features a toolbar with 'Unsave...', undo, redo, refresh, search, and a 'Start Automation' button. The workflow diagram consists of a green 'Trigger' block with a lightning bolt icon and a red exclamation mark, connected to a dashed 'Next Action' block. An orange plus sign is located at the bottom left of the main area.



DEMO

FME Server Automation Writer





DEMO



POLL

Kommande webinarie

11 juni FME Database Mastery

<https://dataflow.center/training-events/>

Contact



fmesupport@sweco.se

anton.sandstrom@sweco.se

mikael.mansson@sweco.se

<https://dataflow.center/contact>