

Next level FME documentation



Questions?

Jonas
Bengtsson



Mikael
Månsson

Agenda

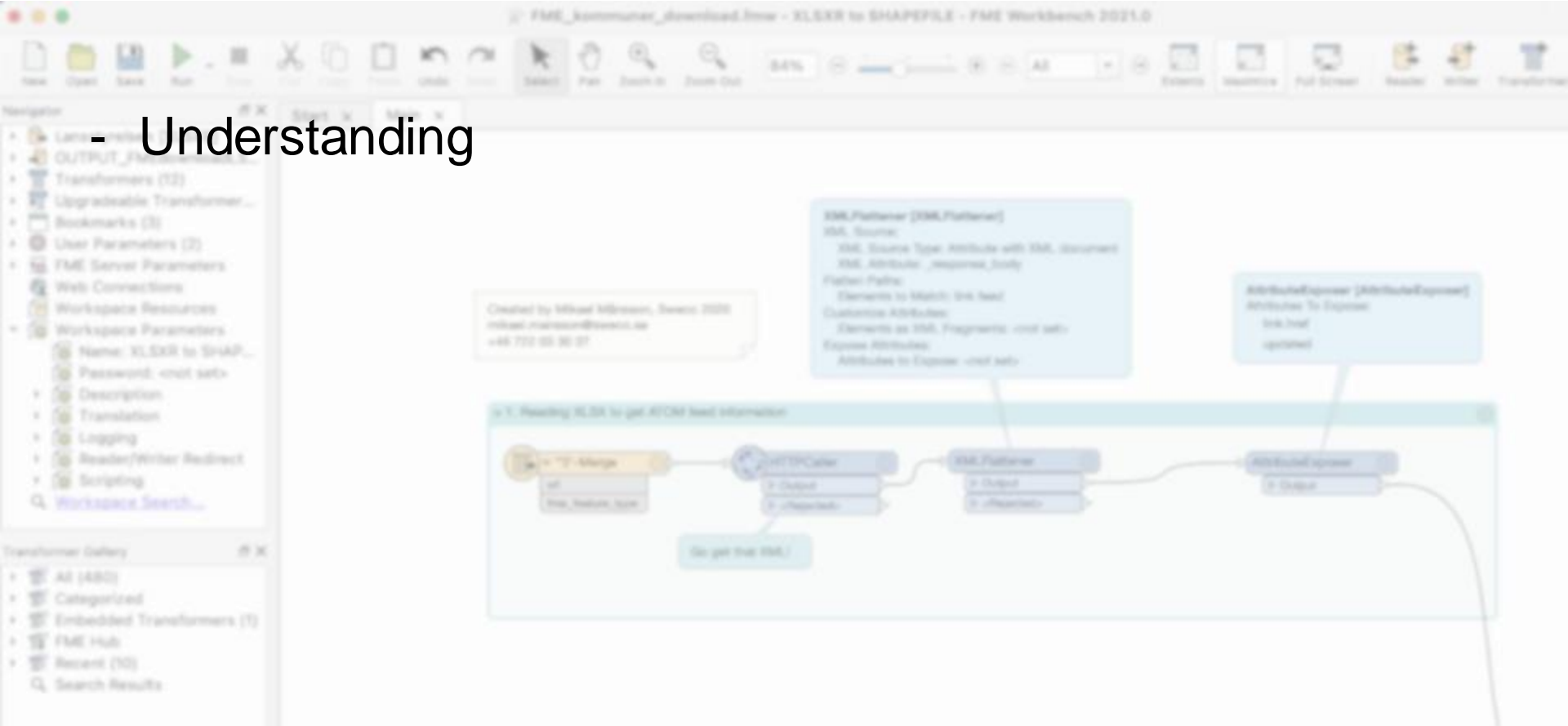
- Why workspace documentation?
 - Tools within FME Workbench
 - Next level concept
- 
- A hand is holding a VR headset in the foreground, with a blurred cityscape at night visible through a window in the background. The scene is dimly lit, with warm bokeh lights from the city.



POLL

Why workspace documentation?

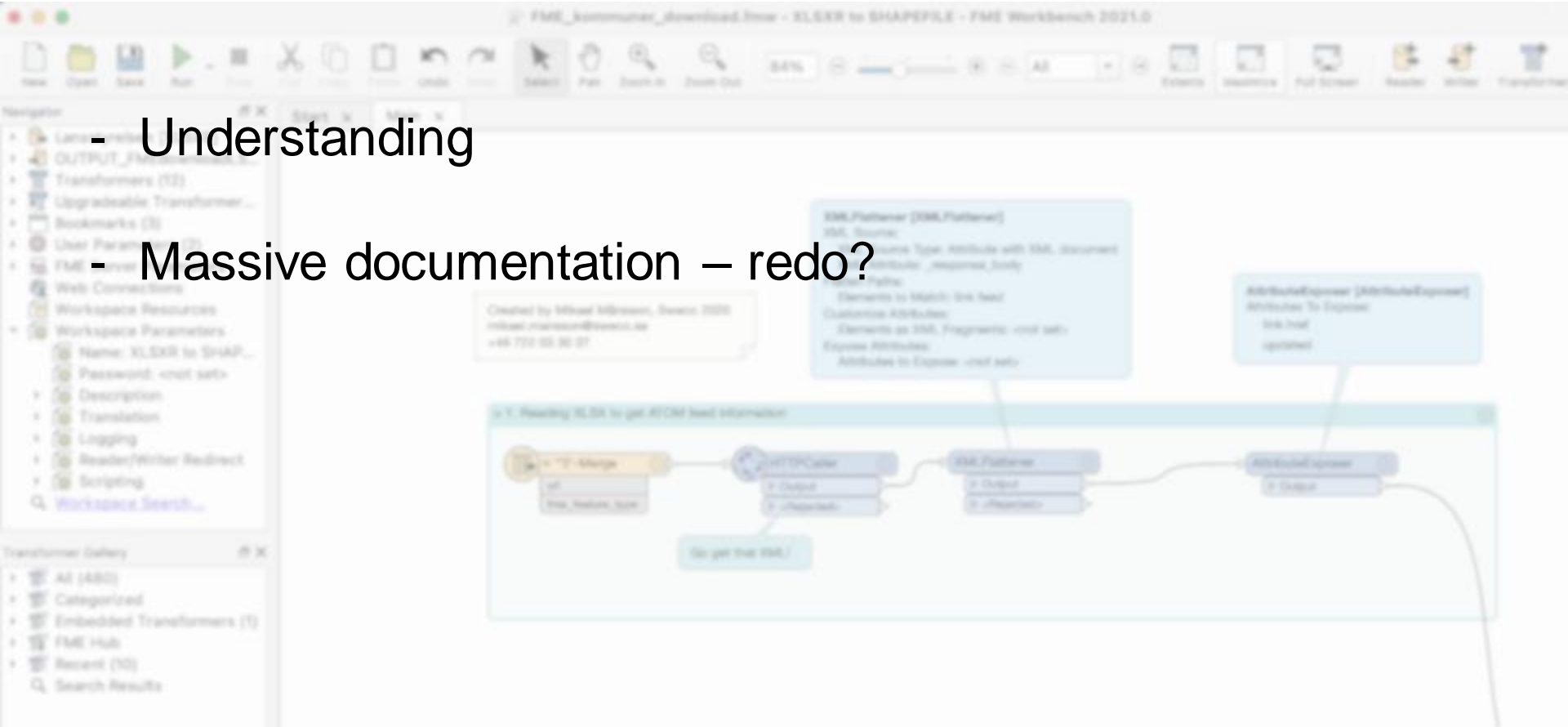
- Understanding



Why workspace documentation?

- Understanding

- Massive documentation – redo?

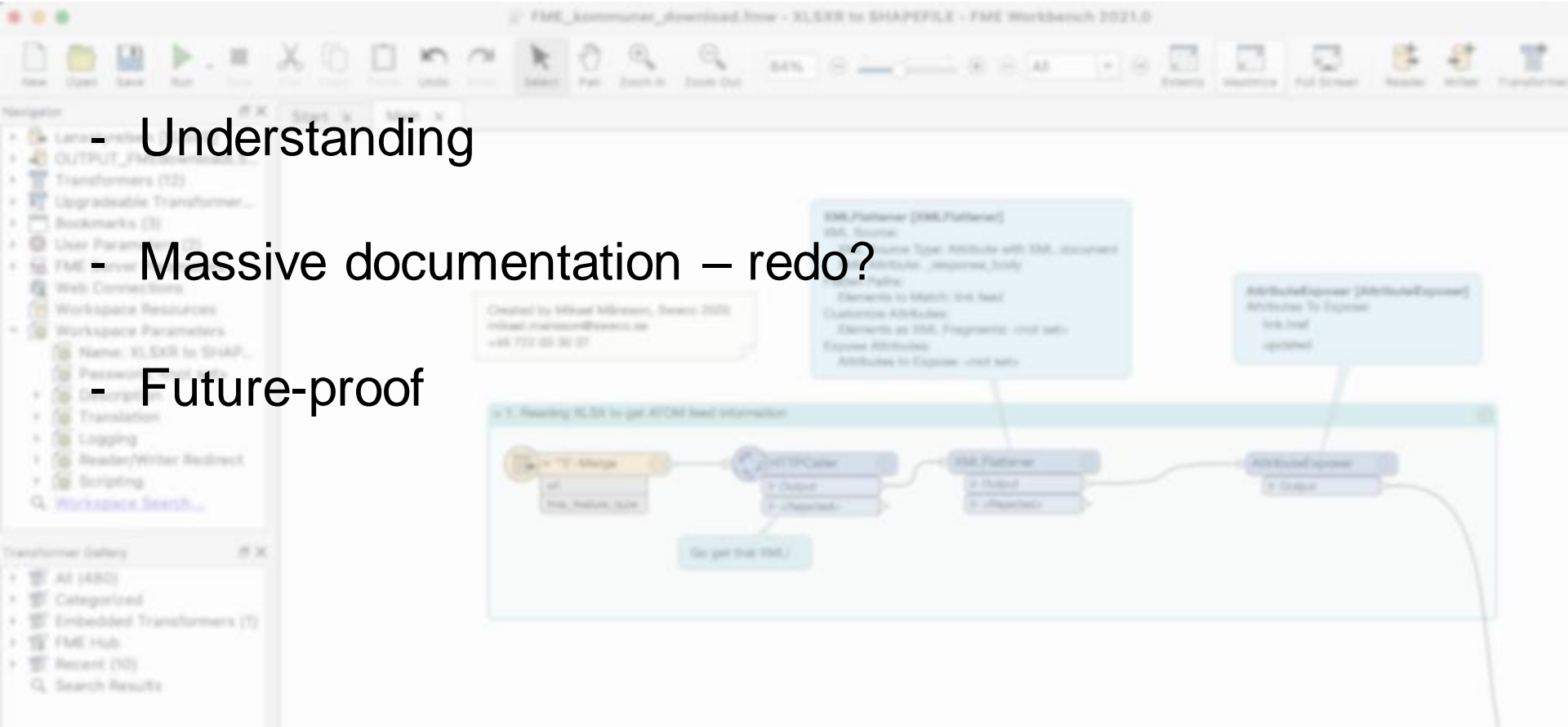


Why workspace documentation?

- Understanding

- Massive documentation – redo?

- Future-proof



MAKE SURE I DARE TO



REVISE

MAKE SURE I DARE TO



PRESS DELETE

MAKE SURE I DARE TO



PRESS RUN

Make future you happy!



Tools within FME Workbench

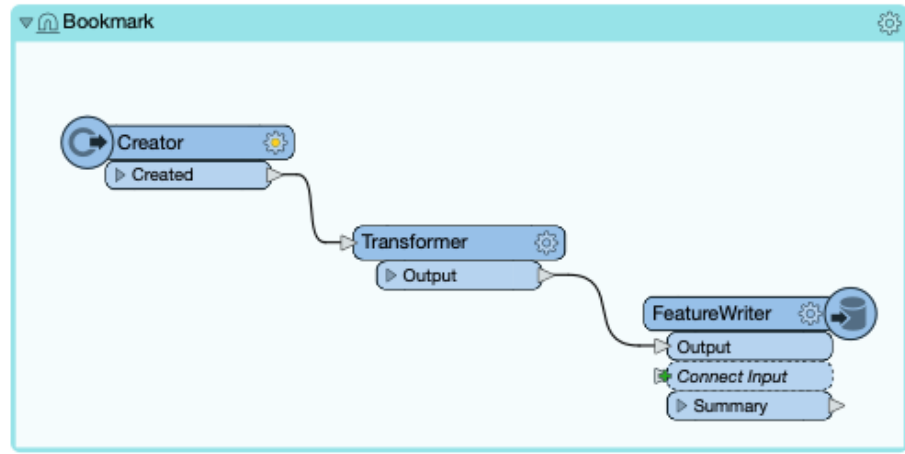


Start x Main x

Annotating Workspaces

Annotation is a key method for a clear and comprehensible design.

Annotation helps other users understand what is supposed to be happening in the translation and also helps the creator when returning to a workspace after a long interval.





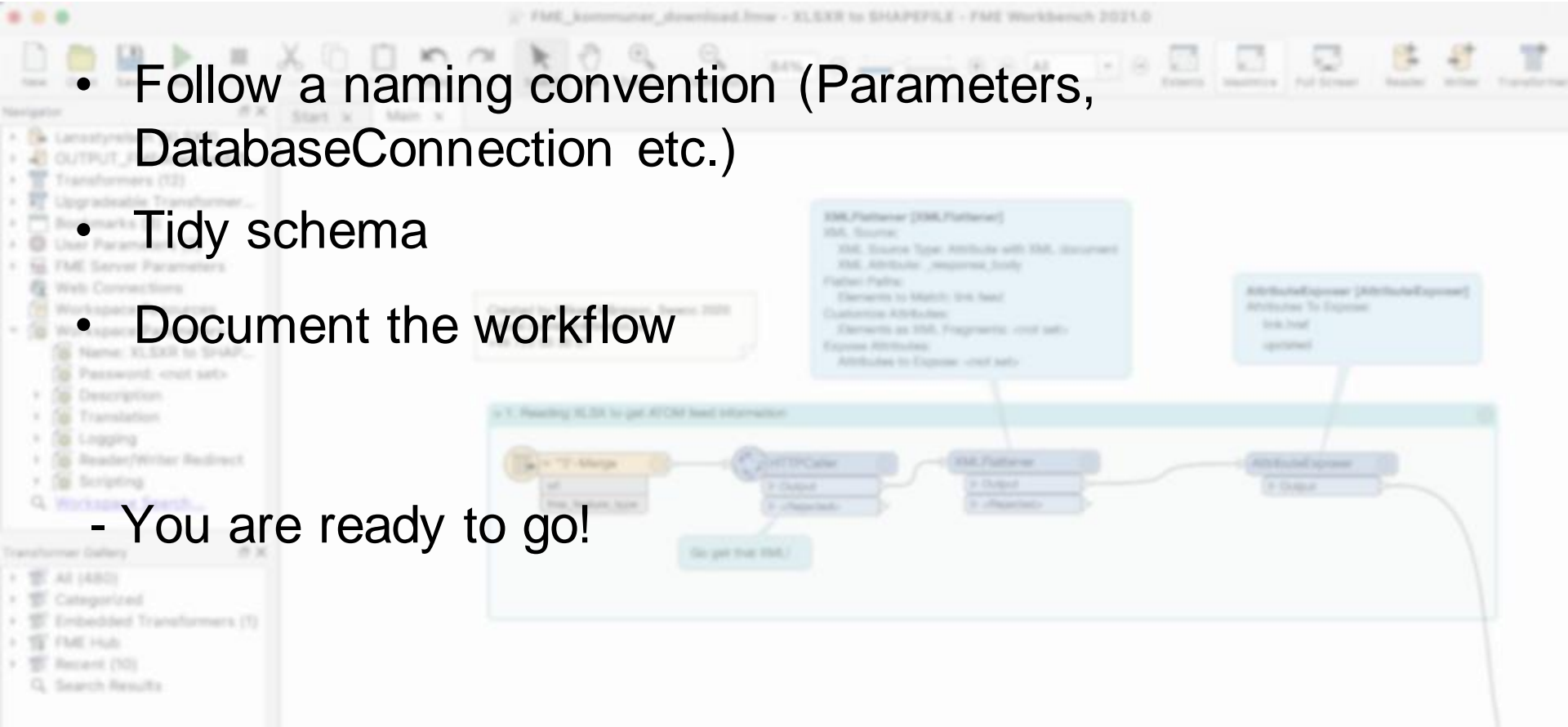
DEMO



POLL

Next level concept

- Follow a naming convention (Parameters, DatabaseConnection etc.)
- Tidy schema
- Document the workflow
 - You are ready to go!











DEMO

FME Training & Webinars by Sweco

TRAINING

MAY 2021			
	25-27/5		FME Desktop Basic
	Online		SEK 5 900
	26/5 08:30 – 12:30		FME Master that Raster
	Online		SEK 4 000

WEBINARS

MAY 2021			
	27/5 9.00-9.30		Webinar - Own that textfile (Swedish)
	Online		FREE Register →

<https://dataflow.center/training-events/index.html>

Contact



fmesupport@sweco.se

jonasbengtsson@sweco.se

mikael.mansson@sweco.se

<https://dataflow.center/contact>